

'O' GEOGRAPHY (273/1) MARKING GUIDE

PART I

OBJECTIVE TYPE QUESTIONS (30 MARKS)

1	C	11	D	21	C
2	A	12	A	22	D
3	C	13	D	23	B
4	C	14	A	24	C
5	B	15	C	25	D
6	D	16	C	26	C
7	D	17	D	27	C
8	A	18	C	28	A
9	C	19	D	29	D
10	A	20	B	30	B

SECTION A

1. **COMPULSORY QUESTION: MAP WORK** (20 MARKS)

Answer **ALL** parts of this question

Study the **1:50,000 (UGANDA) ALOI** map extract part of sheet 33/1, Series Y732, Edition 1 – USD and answer the questions that follow:

(a) (i) State the grid reference of trigonometrical station primary at Aloi.

(01 mark)

- GR 219506⁷ OR 220506⁷
I

(ii) Name the manmade feature found at grid reference 105604. (01 mark)

- Reservoir

(b) Determine the bearing and direction of the forest reserve north west of Aloi town (GR.184514) from the rest house at Alebtong (GR 229497). (03 marks)

- $270 + 020 = 290^\circ$

- Consider $288^\circ - 292^\circ$

(c) Draw a sketch map of the area shown and on it mark and name;

(i) Loose surface roads

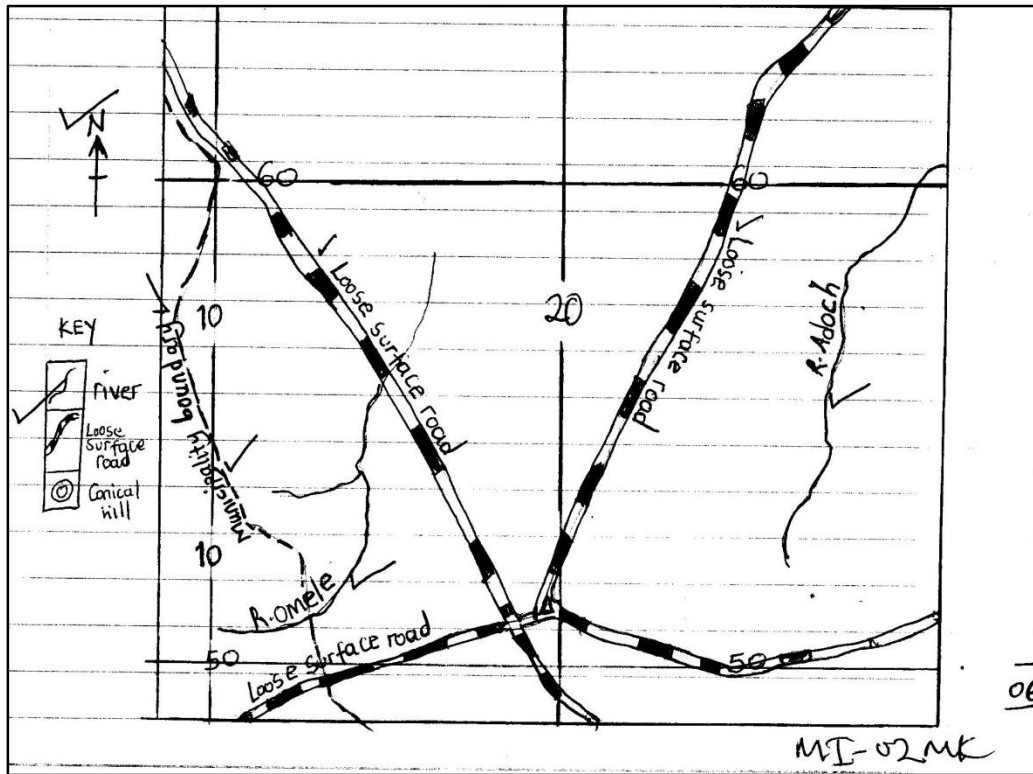
(ii) Municipality boundary

(iii) Rivers : Omele and Adoch

(iv) Conical hill South of Aloi town

(06 marks)

A sketch map of ALOI showing loose surface roads, municipality boundary, rivers; OMELE and ADOCK, conical hill south of ALI town



(d) Describe the;

(i) Drainage of the area,

- There is seasonal swamp in the north of Aloi town
- there are rivers such as Kai, Aloi, R. Oruk
- there are many water reservoirs
- rivers display a dendritic drainage pattern
- small seasonal swamp at the mouth of river Kale
- rivers such as Adoch are elongated

2 x 1 = 2 marks

(ii) Relationship between drainage and settlement in the area shown on the map extract. (06 marks)

- There are settlement, around bore holes at ongom in the south, of aloi twon
- There are no settles around reservoirs
- The seasonal swamp is avoided by settlements
- well drained areas have attracted settlements south of Aloi town (TC)
- poorly drained areas discourage settlement because they are water logged north of Aloi town

2 x 1 = 2 marks

2. COMPULSORY PHOTOGRAPH INTERPRETATION QUESTION (15 MARKS)

(a) Identify the economic activity taking place in the photograph. (01 mark)

- *oil drilling / mining / oil extraction*

(b) Describe the factors which have favoured the economic activity identified in (a) above. (06 marks)

- *presence of large deposits of the minerals / oil reserves*

- *relatively gentle slope for easy mechanization*

- *presence of extensive land for installing derricks*

- *availability of large sums of capital or abundant capital for investment in mineral prospects*

- *availability of skilled and semi-skilled labour for mineral prospecting, drilling*

- *presence of abundant or large quantities of power or energy for processing the mineral*

- *adequate or large supply of fresh water for processing the minerals , cooling machines*

- *existence of a wide, ready, large market for the mineral or oil*

- *improved, efficient transport for movement of minerals, labour to industrial centres e.g. pipelines, fuel tanks*

- *proximity to the coast which makes exportation or transportation of the mineral products easy*

- *improved or advanced technology in mining techniques like installing of oil derricks, oil pumps*

- *positive / supportive government policy towards the mining sector*

- *presence of high quality oil free from Sulphur that is highly demanded*

- *the occurrence of oil wells close to the surface for easy exploitation*

Note: any described point – 01 mark

(c) Explain the effect of the activity on the environment. (06 marks)

negative

- *pollution of air, water, land by waste gases, chemical, poor disposal of waste*

- *deforestation or loss of vegetation cover like grass, trees for industrial development, settlement*

- *development of slums due to poor housing conditions*

- *large population in mineralized areas / mining centres which causes easy spread of diseases / over crowding*
- *exhaustion of the mineral due to high rate of exploitation hence development of ghost towns*
- *land degradation where hollows or depressions are created hence breeding grounds for vectors*
- *leads to urbanization with its associated problems like high crime rates, unemployment, prostitution / poor sanitation*
- *destruction of the landscape by leaving mine-pits and leys*
- *destruction of the biodiversity*

positive effects

- *development of infrastructure like roads, pipelines, ports, educational centre*
- *provision of employment opportunities leading to improved incomes, improved living standards*
- *markets for goods and services lead to improved standards of living*
- *urbanization with its related advantages of improved social services*
- *it leads to economic diversification to avoid reliance on one or few economic activities*
- *source of foreign exchange which is used for import trade*
- *it is used for research and educational purposes which improves knowledge*
- *source of revenue through taxes used for infrastructure development*

Note: Effects are positive and negative

- (d) Giving reasons for your answer, suggest an area in East Africa where the photograph could have been taken. (02 marks)

- *Mombasa / changamwe*
- *ntoroko, wanseko, butiaba, on lake Albert*
- *Dar-es-Salam*

Reason

- *mining is taking place there*
- *drilling of oil there / Derrick installed*
- *gently sloping areas*

correct area – 01 mark

correct reason – 01 mark

3. COMPULSORY QUESTION: FIELD WORK (15 MARKS)

For any one field work study you have conducted;

- (a) State the;
- (i) Topic, (02 marks)
- *the topic should state WHAT was studied and WHERE the study took place. It should be geographical*
- (ii) Objectives, of the study. (02 marks)
- *related to the topic of study*
 - *measurable, achievable and realistic*
 - *they should be attainable within a defined time frame*
 - *they must be stated using appropriate phrases e.g. to find out, to determine, to investigate, to suggest, to know,*
- Note: Topic involving factors, candidates for historical background and location Phrases to know, to understand, to admire, to appreciate, should not be used**
- (b) Describe how you used any **two** of the following methods to collect data in the field.
- *the candidate must select any two methods, explain what each method is and how it was used and what was obtained*
- (i) Observation
- *this is the use of one's eyes to see all the geographical phenomena and their existing interrelationships. the aspects observed should be stated e.g. relief features, vegetation types, drainage features, man-made features with local names. application, I used my eyes and saw / see.....*
- (ii) Measurement
- *this is the act of taking, establishing, determining units of quantity, weight, volume, distance, height of geographical phenomena using calibrated and non calibrated instruments e.g. weighing scale, metre ruler, tape measure, clocks, measuring cylinder, striden / paces. The evidence of what was measured and results yielded must be given*
- (iii) Recording
- *recording is writing down in sentences or diagrams, sketches, tables etc using recording tools like pens, pencils, papers, audio – visual gadgets e.g cameras*
 - *the evidence of what was recorded must be given e.g. I wrote down cassava, beans, sold in the market not the commodities or I wrote down the relief features without their local names*
application may involve the use for;
 - *paper to write down, cameras to photograph, audio gadgets to record sound e.g. wrote down the problems like theft*
- (iv) Interviewing. (04 marks)

- involves asking of oral questions to a respondent who replies through speaking
 - the nature of the question and identification of the respondent by name or title should be brought out or implied in the answer e.g. / asked the farm manager or fishermen or name of the respondent (local name) the benefits of the activities and he told us they included provides employment, source of income etc
- summary and coding
- definition D 1 mark
- application and finding – 1 mark
- any two methods = 2 marks

Note: definition – 01 mark

application tool = 01 mark

(c) Draw a sketch map of the area studied and on it mark and name;

(i) Physical features

- The sketch map should show relief features such as hills, conical hills, flat topped hills, ridges, valleys, narrow valleys
- slopes eg. steep and gentle
- lowlands, headlands, reaches with local names
- drainage feature like (rivers) lakes, swamps
- vegetation features (forests, grasslands, swampy vegetation, thicket

(ii) Man made features

(04 marks)

- lumbering, animal rearing, forestry
- trade and commerce, market, settlement, mining, quarrying
- transport (road, railway)

NB: Evidence in form of place names, physical features = 02, man made features = 02 marks

(d) Outline the conclusions of your study.

(03 marks)

- candidates are expected to bring out conclusion drawn from the field in form of relationships which are related to the topic and objectives. these are;
- physical to physical relationships e.g. relief and drainage, relief and soils, relief and vegetation, drainage and vegetation, soils with drainage
- physical to human relationships e.g. relief and settlement, drainage with agriculture, relief and communication, drainage and settlement
- human to human relationship e.g. communication with settlement, communication with trade, agriculture with trade, settlement with trade.

NB: local name and direction, no evidence no mark

SECTION B : EAST AFRICA (20 MARKS)

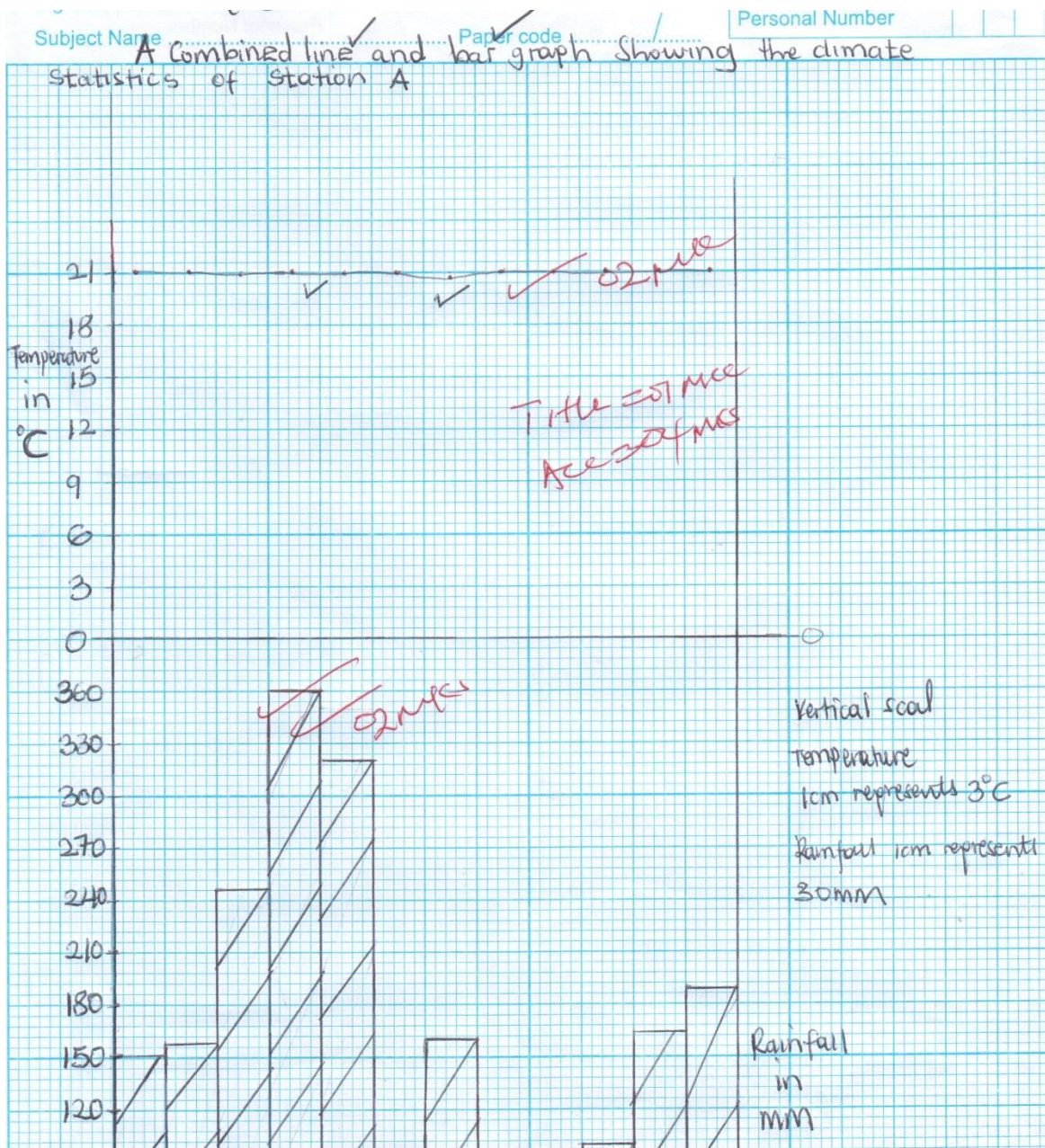
Answer only **ONE** question from this section

4. Study the table below showing the climate statistics of station A and answer the questions that follow:

Station A (Bukoba, Att. 114M) Tanzania

Months	J	F	M	A	M	J	J	A	S	O	N	D
Temp °C	21	21	21	21	21	21	20	21	21	21	21	21
Rainfall (mm)	151	159	247	360	320	85	160	50	80	100	164	190

- (a) Draw a suitable graph to represent the climate statistics indicated in the table above. (05 marks)



(b) Calculate the;

(i) Mean annual rainfall

(01 mark)

- *Mean annual rainfall = total of all rainfall values from January to December divided by one year*

$$- \frac{151 + 159 + 247 + 360 + 320 + 85 + 160 + 50 + 80 + 100 + 164 + 190}{1 \text{ year}}$$

$$- \frac{2066}{1} \text{ mm} = 2066 \text{ mm}$$

(ii) Mean annual temperature for the station.

(01 mark)

$$- \text{Mean annual temperature} = \frac{21 + 21 + 21 + 21 + 21 + 20 + 21 + 21 + 21 + 21 + 21}{12}$$

$$- \frac{251}{12} = 20.9^{\circ}\text{C} \quad \sim \mathbf{21^{\circ}\text{C}}$$

(c) Describe the characteristics of the climate of station A.

(05 marks)

- *the mean annual temperature is 20.9°C*
- *high relative humidity throughout the year of over 80%*
- *there is mainly two rainfall peaks / bimodal / double maximum*
- *hot temperatures over 20°C all year round*
- *small diurnal temperature range (1 – 5°C)*
- *there is low pressure during the equinox (march and sept) when the sun is overhead at the equator*
- *small annual temperature range which is 1°C*
- *rainfall is received throughout the year / absence of a distinct dry season / convectional rainfall*
- *the coolest month is July with 20°C*

- *the driest month is August with 50mm*
- *there is a thick cloud cover / dense cloud cover*
- *the wettest month is April receiving 360mm*

any 5 x 1 = 5 marks

(d) Explain the influence of climate on the land use activities in the area of the station. (04 marks)

- *there is planting of crops in the wet season in January, February*
- *there is forestry taking place due to the heavy rainfall received throughout the year*
- *diary farming due to the cool temperature*
- *wild life conservation due to the forests attracted by heavy rainfall*
- *climate enables the formation of snow and glaciers on mountain peaks which attracts local and foreign tourists*
- *industrialization due to the adequate water supply from heavy rainfall throughout the year for cooling machines*
- *bee keeping due to the heavy rainfall that encourages growth of trees*
- *the heavy rainfall and hot temperatures have attracted charcoal burning due to various tree species*
- *fishing due to much water added in the water bodies*
- *food gathering from the forests*
- *mining of sand etc*

any 3 x 1 = 3 marks

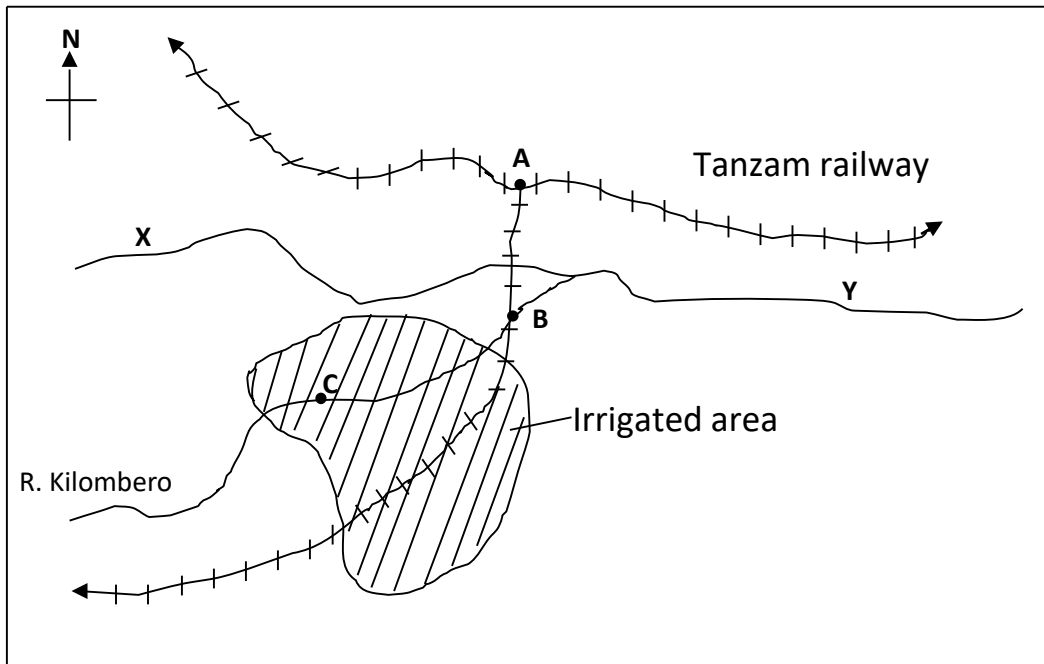
(e) Outline the problems facing the people at the station. (04 marks)

- *heavy rainfall leads to flooding which destroys property, loss of lives and destruction of bridges*
- *the heavy rainfall causes landslides which destroy property*
- *the heavy rainfall accelerates soil erosion in highland areas*
- *stagnant water in lowlands act as breeding place for disease causing vectors*
- *dangerous wild animals attack man due to the forests or tropical rainforests*
- *there is soil exhaustion due to monoculture*
- *there is limited land for expansion due to the forests or tropical rainforests*
- *highly perishable goods are grown leading to losses*

- *lumbering due to natural forests lead to global warming, low rainfall*
- *pests and diseases attack the crops due to moist conditions*
- *there is poaching of wildlife in forested areas which affects tourism industry*

any 4 x 1 = 4 marks

5. Study the sketch map of Kilombero valley irrigation scheme and answer the questions that follow:



(a) Name the;

(i) Towns marked **A**, **B** and **C**

- *A : Kilosa*
- *B : Kidatu*
- *C : Ifakara*

(ii) Rivers; **X** and **Y**

(05 marks)

- *X : Great Ruaha*
- *Y : Rufiji / Rufiji*

(b) Describe the factors which favoured the location of the Kilombero irrigation scheme. *(06 marks)*

- *the presence of vast / extensive / large tracts of land favoured the location of the scheme*

- *presence of reliable or constant / adequate supply of irrigation water from river Rufigi, Great Ruaha, Kilombero*
- *the area has a relatively sparse population leading to less resettlement costs*
- *availability of abundant / cheap labour supply from the local people*
- *Availability of well developed / improved / efficient transport routes to transport farm produce to market centres*
- *availability of technical expatriate /skilled man power to start the irrigation scheme*
- *low incidence of diseases, pests in the area*
- *adequate capital for investment in irrigation scheme*
- *the supportive / positive government policy to support the irrigation schemes increase sugarcane production through giving capital*
- *the heavy / reliable rainfall between December and May causing flooding in the valley*
- *the flat and undulating plains made it easy and viable to establish an irrigation scheme*
- *the area has fertile / well drained soils as a result of constant deposition by river kilomber*
- *description*
- *availability of the ready market for sugar*
- *the political stability in the country*

NB: Explanation of the point any 6 x 1 = 6 marks

- (c) Explain the contribution of the irrigation scheme to the people living in the area. (05 marks)
- *it is a source of employment for the local people who work on the scheme like drivers, accountants for income which has improved their standards of living*
 - *it is a source of income from the sale of sugarcane, sugar and other crops which has improved on their standards of living*
 - *it has led to the development of infrastructure like roads to transport goods and services*
 - *dams were constructed for storage of water for the people to use for agricultural purposes*
 - *the people have been provided with safe water for domestic use*

- *it has helped the people to acquire skills in irrigation farming which has promoted increased production*
- *it has promoted the development of agro – processing industries such as sugar processing / refining*
- *it has contributed to the development of urban centres like ifakara, kilosa, which provides better social and economic services for the people*
- *it has led to economic diversification in sectors of transport or trade or industry thus widening source of income for the people*
- *it has made it possible for the utilization of marginal lands and hence created more land for agricultural activities and settlement*
- *it provides market to the out growers earning them income to improve on eh standards of living*
- *the government earns a lot of revenue through taxes used to provide social services like roads, schools for easy movement*
- *better scientific methods are taught to farmers which leads to high yields*

any 5 x 1

NB: A contribution must be explained for the candidate to earn a mark i.e. mark is tied to explanation

the role / function of the contribution must come out

(d) Outline the problems which have resulted from the establishment of the scheme. (04 marks)

- *land exhaustion due to mono – cropping / over cropping*
- *sugar cane growing is labour intensive and hence tiresome*
- *water borne diseases which affects the farmers due to breeding of mosquitoes and snails*
- *farmers are faced with a threat of snake bites*
- *soil erosion in the area during the rainy season and due to monoculture*
- *floods during the rainy season destroying property*
- *soil salination occurs due to excessive evaporation*
- *there is siltation of distribution and drainage canals / channels*
- *insecurity of the wrong dowers*
- *water, land and air pollution*
- *famine due to fore going the growing food crops*

- school drop outs due to the need to work on the irrigation scheme
- displacement of the people

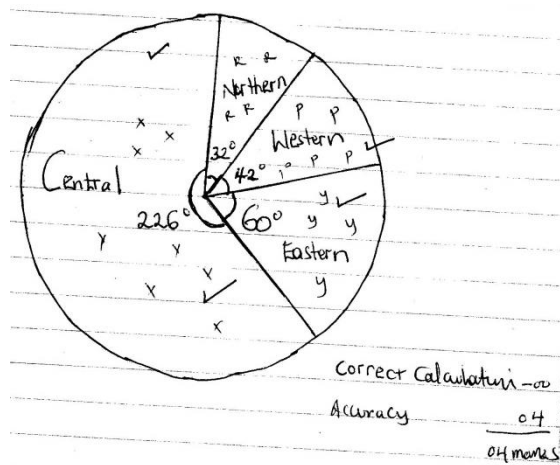
Note: A sentence form is needed

6. Study the table below showing Uganda's population living in urban centres by 2010 and answer the questions that follow;

Region	Urban population
Central	1,200,000
Eastern	320,000
Northern	170,000
Western	220,000
Total	1,910,000

- (a) Draw a pie – chart to show the population living in urban centres. (04 marks)

- A pie chart showing Uganda's population living in urban centres by 2010
- Central $\frac{1200,000}{1,910,000} \times 360 = 226.2^\circ \sim 226^\circ$
- Eastern $\frac{320,000}{1,910,000} \times 360 = 60.3^\circ \sim 60^\circ$
- Northern $\frac{170,000}{1,910,000} \times 360 = 32.0^\circ \sim 32^\circ$
- Western $\frac{220,000}{1,910,000} \times 360 = 41.5^\circ \sim 42^\circ$



- (b) Explain the factors which have led to development of urban centres in East Africa. (06 marks)
- rich / productive hinterland provide goods for trade, raw materials for industries
 - availability of efficient / well developed communication systems by water, road and railway network

- *the positive government policy towards the expansion of the towns or cities e.g. Dodoma one of the cities of Tanzania through referendum*
 - *improved technology used in the construction of roads, railways*
 - *the relatively flat land or gently sloping land for easy mechanization, construction of roads, railways*
 - *the presence of extensive land for expansion of the town*
 - *large or adequate capital invested in the construction of towns*
 - *the adequate, fresh water supplies for domestic and industrial use*
 - *cool climate has attracted settlement in highland areas*
 - *availability of skilled labour to construct the infrastructure like roads, schools, entrepreneurs provide skills for innovation, business trade*
 - *the diversity of functions like commercial, centres, banking and financial centre, tourist centres,*
 - *strategic location at ports, road junctions, for trade, transport*
 - *well drained fertile soils for crop growth, agricultural raw materials,*
 - *improved security for peaceful settlement and trade or business*
 - *the availability of large deposit of minerals and associated industries e.g. Kasese, Mombasa, Mwanza*
 - *the existence of large population offered cheap labour and wide ready market for goods produced*
 - *a number of towns at the coast developed as a result of influence of early Asian traders who settled there such as Mombasa, Dar -es – Salam*
 - *availability of better many job opportunities especially in the industries, service sector*
- explanation should reflect cause or effect*

6 x 1 = 6 marks

(c) Outline the;

(i) Problems resulting from the development of urban centres in East Africa. (06 marks)

- *loss of cultural ties*
- *high population leading to unemployment*
- *unemployment leading to high crime rate*
- *poor sanitation leading to spread of diseases*

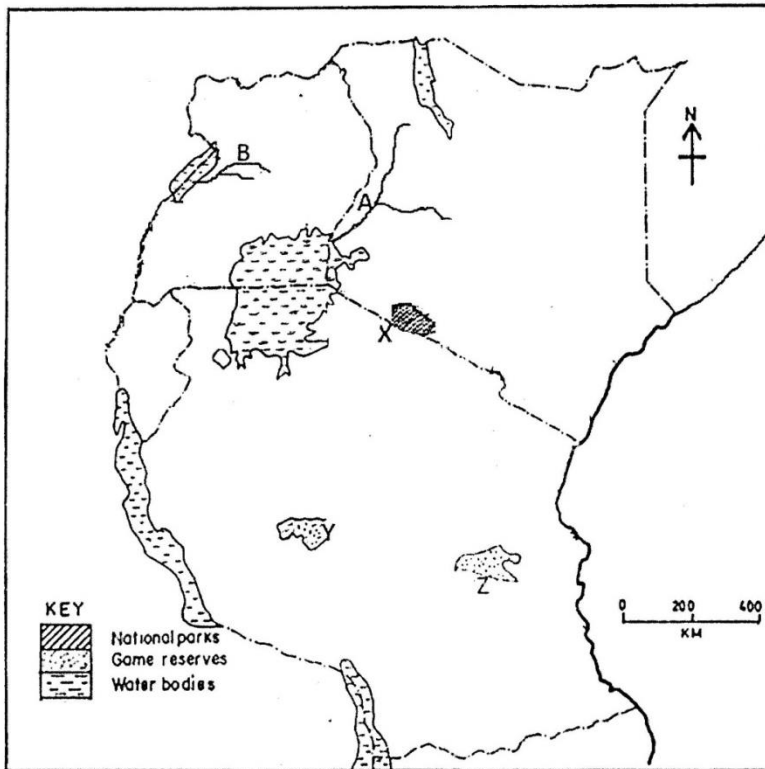
- *traffic congestion leading to accidents, delays*
 - *high costs of living with in towns leading to slum development such as Katanga in Kampala, Kibera in Nairobi*
 - *pollution of air, water, land by waste gases, chemicals, poor disposal of wastes which is harmful to peoples health*
 - *development of slums with their associated problems like prostitution, poor sanitation, high crime rate*
 - *declining food production since the young energetic men and women migrate to urban centres*
 - *destruction of vegetation leading to environmental degradation*
 - *pressure on social amenities*
 - *high government expenditure on provision of social services*
- any 6 outlined points 6 x 1 = 6 marks*

(ii) Steps being taken to solve the problems above in (c) (i). (04 marks)

- *improving health services in rural areas to reduce on congestion of people in urban areas for services*
- *establishment of better housing facilities for low income earners to replace the existing ones*
- *development of rural areas through providing basic infrastructure like roads, health care*
- *tightening up security to reduce the problems of criminal cases,*
- *expansion of social and economic services*
- *construction of sky scrapers to provide accommodation*
- *decentralization of industries to create more employment opportunities in rural areas*
- *recycling of the industrial wastes / fumes*
- *implementation of anti – pollution laws to reduce pollution levels*
- *encouragement of cottage industries which favour small scale craft production to provide employment opportunities to people*

Note *The tense must be emphasized 4 x 1 = 4 marks*

7. Study the sketch map of East Africa provided and answer the questions that follow:



(a) Name the;

(i) Rivers; **A** and **B**

- *A : Nzoia*
- *B : Kafu*

(ii) National park marked **X**

- *X : Masai mara*

(iii) Game reserves **Y** and **Z**

(05 marks)

- *Y : Katavi*
- *Z : Selous*

(b) Describe the factors which have favoured the development of the tourist industry in East Africa. *(06 marks)*

- *presence of beautiful scenery such as snow capped mountains like Rwenzori, clear blue lakes, water falls which attract tourists*
- *diversity of flora and fauna attract people from different parts of the world*
- *the supportive / positive government policy of organizing package tours, financing tourists attractions or activities and constructing roads*
- *the conducive equatorial climate which is hot and wet conducive for tourists*

- *improved infrastructures like roads, air ports for easy movement of tourists to all tourist destinations*
- *improved accommodation facilities like hotels, lodges, inn which offer tourists comfort to stay*
- *availability of adequate capital for investment in tourism related activities*
- *availability of skilled labour to manage the tourism activities to carryout research*
- *high level of advertisement through internets, television, brochures to widen the market*
- *political stability which created ha good atmosphere for the tourists*
- *the highly hospitable people who welcome the tourists*
- *the use of diversity of languages which makes communication easy for the tourists e.g. English, Kiswahili, Arabic*

NB: The point must be described

any 6 x 1 = 6 marks

(c) Explain the contribution of the tourist sector to the development of East Africa. (06 marks)

- *it is a source of income through the sale of goods and services used to improve people's living standards*
- *it is a source of employment opportunities to the people as they work to improve their living standards like tour guides*
- *it leads to the development of infrastructure like roads to ease movement of goods and services*
- *it is a source of revenue through taxes used for infrastructural development*
- *it helps to advertise the economy abroad hence improves trade and investments*
- *it promotes international relations which attracts investment, peace and stability or foreign aid*
- *it is used for research and educational purposes which improves knowledge*
- *it helps to protect rare and endangered wildlife species for the future generation*
- *environmental conservation for ecological balance or preserving the micro climate*
- *it is a source of foreign exchange which is usd for import trade or infrastructural development*
- *it has led to economic diversification to avoid reliance on one or few economic activities or widens the source of income*

- *it leads to the development of urban centres which attracts social services to the people in the area*
- *it helps to utilize marginal land hence effective utilization of natural resources for community development*
- *it is a source of foreign exchange which is used for import trade or infrastructural development*
- *provision of market to the locally made products such as art and craft*

NB: *The points must be explained*

any 3 x 2 = 6 marks

(d) Outline the problems facing the tourist sector. (03 marks)

- *poorly developed transport network / impassable roads to tourist sites*
- *remoteness of some tourist sites*
- *the hotels / lodges are of low standards*
- *terror threats scare away tourists*
- *competition among east African countries for tourists due to similar attractions*
- *poaching of the wild animals for game meat*
- *encroachment on the natural parks and game reserves*
- *pollution of wildlife habitats*
- *bush fires destroy wildlife and their habitats*
- *outbreak of diseases which scare away the tourists and attack animals*
- *climate hazards like prolonged droughts, flooding lead to difficulty in movement or death or migration of animals*
- *limited capital needed to invest in the tourist industry*
- *hostility scares away the tourists like karamojongs, masai, turkana*
- *limited skilled labour to work in the industry*
- *seasonality of the tourists*
- *low domestic market due to low income*
- *insecurity scares away the tourists*
- *limited capital needed to invest in the tourists*

a candidate should give a meaningful statement not one word answer

any 3 x 1 = 3 marks

END