



SHALOM PRIMARY SCHOOL

PRIMARY SEVEN TERM II SCIENCE REVISION

SET IV

SECTION A (40 Marks)

1 . Which body organ is used for tasting?

.....
.....

2 . What does the term vice mean in poultry keeping?

.....
.....

3 . How is a seed different from a fruit?

.....
.....

4 . Why are metals painted?

.....
.....

5 . Mention one characteristic which makes a spider not to be grouped under insects.

.....
.....

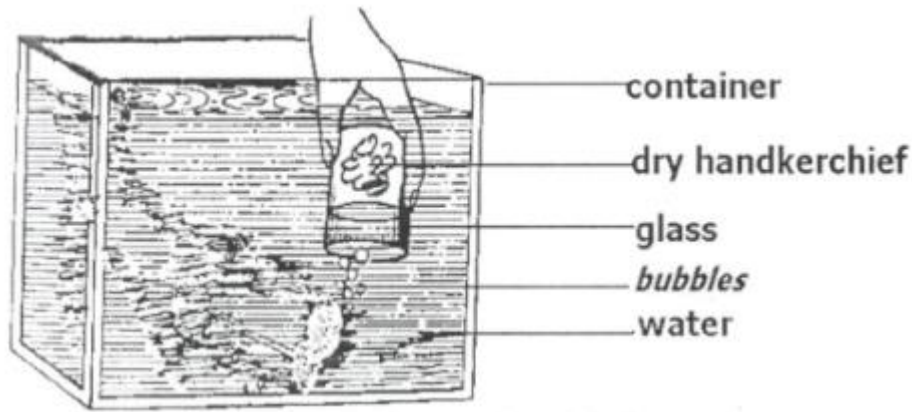
6 . Why do people preserve food?

.....
.....

7 . How are conifers different from other non-flowering plants?

.....
.....

8 . What property of air does the diagram illustrate?



9.
.....
10. **Give the function of a pinna in a human ear.**
.....
.....
11. **Explain how plants are used as energy resources in our environment.**
.....
.....
12. **Name the type of change that takes place when mangoes ripen.**
.....
.....
13. **Why does a needle placed gently on the surface of water float?**
.....
.....
14. **What is the importance transpiration to plants?**
.....
.....
15. **What component of loam soil makes it most suitable for growing crops?**
.....
.....
16. **State the importance of grit in the digestive system of a bird.**
.....
.....

17 . Identify one example of a magnetic substance.

.....
.....

18 . Smoking is very bad to human health. Why does the government of Uganda licence companies that make cigarettes?

.....
.....

19 . Write CDD in full.

.....
.....

20 . Why are people encouraged to drink boiled water?

.....
.....

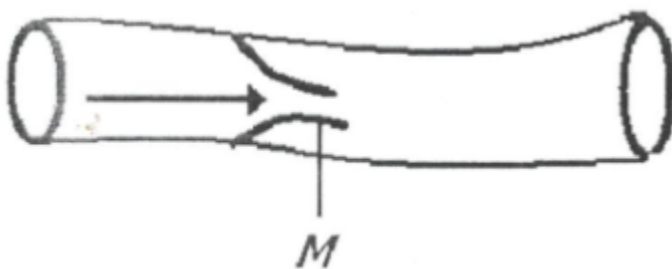
21 . A female fish lays eggs in water. How are these eggs fertilized?

.....
.....

22 . Nanku burnt herself with a hot flat iron. What type of injury did she get?

.....
.....

Use the diagram below to answer question 22.



23 . What is the importance of the structure marked M in the above blood vessel?

.....
.....

24 . Give one difference between a sprain and a strain.

.....
.....

25. In which part of a human body are red blood cells made?
.....
.....

26. Identify the body part an insect uses for balancing during flight.
.....
.....

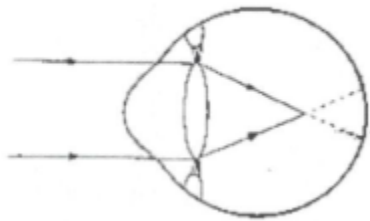
27. What does the term “resource” mean?
.....
.....

28. Why do we see the flash of lightning before we hear the sound of thunder during rain storms?
.....
.....

29. Write down the vector that spreads elephantiasis.
.....
.....

30. Convert 100°C to $^{\circ}\text{F}$.
.....
.....

31. What eye defect is shown in the diagram below?



.....
.....

32. Why is the measles vaccine administered at the age of nine months?
.....
.....

33. State one advantage of family planning.
.....
.....

- 34 . Identify one psychological characteristic which is common in adolescents.
.....
.....
- 35 . Apart from getting sunlight, why else do weak stems climb others
.....
.....
- 36 . How does rural electrification help in conserving the environment?
.....
.....
- 37 . Name one cold blooded vertebrate that has a bony shell.
.....
.....
- 38 . Identify one health reason why building industries should be limited.
.....
.....
- 39 . Why should wood being burnt into charcoal be covered with soil?
.....
.....
- 40 . In the space provided below, draw a compound pinnate leaf.
.....
.....
- 41 . Why is food digestion said to begin in the mouth?
.....
.....

SECTION B

- 42 . (a) What is a solute?
.....
.....

(b) Give one solute used in making ORS.

.....
.....

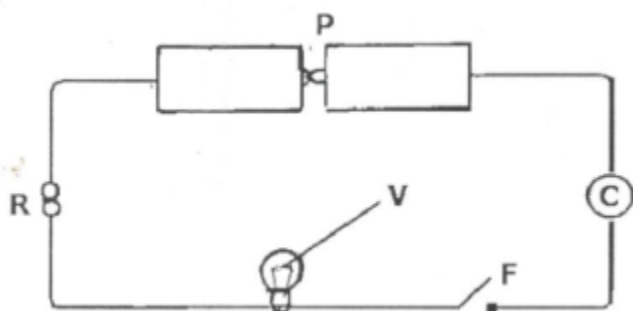
(c) Why is water said to be a universal solvent?

.....
.....

(d) What health condition can be treated using ORS?

.....
.....

43 . The diagram below shows an electric circuit. Study it carefully and answer the questions about it.



a) Name part marked F.

.....
.....

b) Give the function of part marked R.

.....
.....

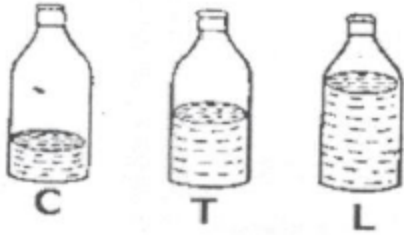
c) What form of energy is contained in part marked P?

.....
.....

d) Why should part marked V fail to produce light when F is closed?

.....
.....

44 . Study the diagram and answer the questions about it



(a) Which of the bottles, when air is blown into them, will produce sound of the highest pitch?

.....
.....

(b) Give a reason for your answer in (a) above.

.....
.....

(c) How can you make the bottles to produce the same sound pitch of sound?

.....
.....

(d) What does the term “volume of Sound” mean?

.....
.....

45 . (a) Give one example of a legume.

.....
.....

(b) How are nitrates important to leguminous plants?

.....
.....

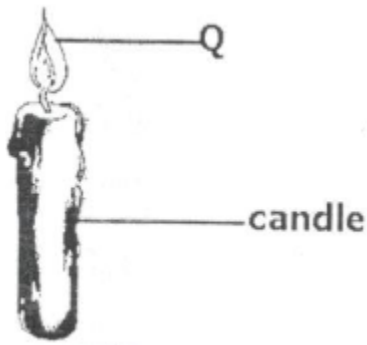
(c) What food value do we get from leguminous plants?

.....
.....

(d) Apart from root nodules, given any other characteristic of leguminous plants.

.....
.....

- 46 . The diagram shows a burning candle. Use it to answer the questions about it.



- (a) Name two forms of energy given off at Q.

.....
.....

- (b) Which component of air supports the candle to burn?

.....
.....

- (c) Identify one other process in living things that uses the same gas as in the experiment above.

.....
.....

- 47 . (a) Identify one type of cattle kept in Uganda.

.....
.....

- (b) Give the importance of the type of cattle you have named in (a) above.

.....
.....

- (c) Identity two advantages of rearing exotic breeds of cattle over local breeds of cattle.

.....
.....

- 48 . (a) Define the following terms:

- (i) Temperature

.....
.....

- (ii) Boiling point

.....
.....

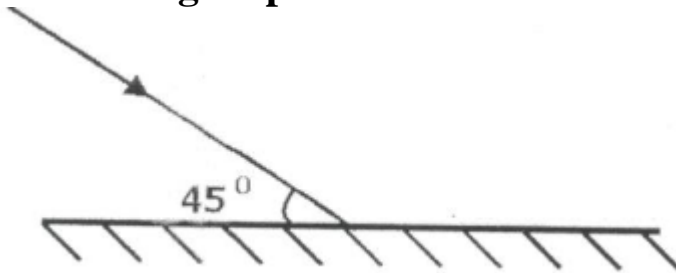
(iii) Heat

.....
.....

(iv) Evaporation

.....
.....

49 . The diagram below shows a light ray being reflected through a plane mirror.



(a) Complete the diagram above.

.....
.....

(b) Calculate the value of the angle of reflection.

.....
.....

(c) What type of reflection is shown in the diagram?

.....
.....

(d) Give one characteristic of images formed through a plane mirror.

.....
.....

50 . (a)What is Primary Health Care?

.....
.....

(b) Give two elements of Primary Health Care.

.....
.....

(c) State one activity done by a community in order to promote primary Health Care.

.....
.....

51 . (a) Write AIDS in full.

.....
.....

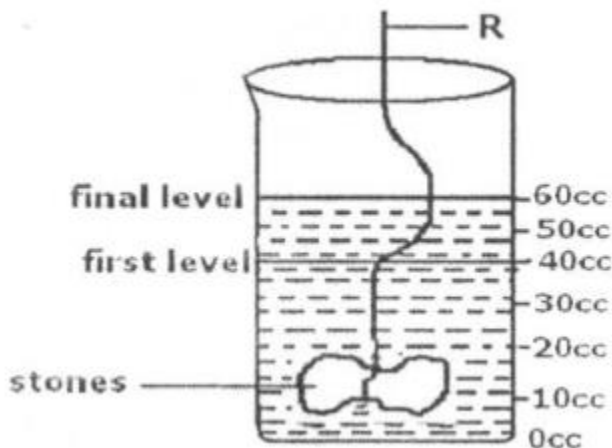
(b) Write down two ways through which AIDS s spread.

.....
.....

(c) What is the best way for a P. 7 pupil to avoid contracting AIDS?

.....
.....

52 . Study the diagram below and answer the questions about



(a) Find the volume of the stone.

.....
.....

(b) Give the use of the use of R in the experiment.

.....
.....

(c) Why do objects weigh less in water than in air?

.....
.....

(d) Name the method used to find the volume of the stone.

.....
.....

53 . Study the diagram of the kidney and answer the questions that follow.

(a) Name the parts marked H and D.

.....
.....

(b) Which type of blood is carried by blood vessel marked B?

.....
.....

(c) Give one disease that affects the organ in the diagram above.

.....
.....

54 . (a) What is a food chain?

.....
.....

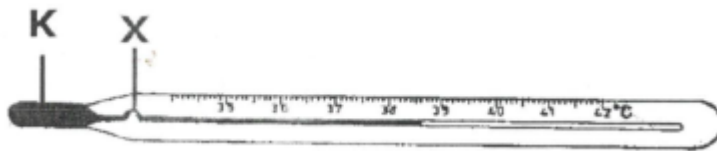
(b) Differentiate between primary consumers and secondary consumers.

.....
.....

(c) Give two ways how plants depend on each other.

.....
.....

55 . The diagram below shows a clinical thermometer use it to answer the questions that follow.



(a) What is the use of the above instrument?

.....
.....

(b) Name liquid marked K.

.....
.....

(c) In a human heart, which part carries out a similar function as part marked X?

.....
.....

(d) Give the importance of part marked X.

.....
.....

56 . Study the diagram below answer the questions that follow.



(a) Name part marked P.

.....
.....

(b) What important practice in part marked Q?

.....
.....

(c) Give two raw material process named in (b) above to take place.

.....
.....
.....

END

..... GOD IS LOVE